



BRITISH  
EQUESTRIAN  
FEDERATION



[www.bef.co.uk](http://www.bef.co.uk)

**Equestrianism is one of Great Britain's top five Olympic and Paralympic sports, and one of the few sports where men and women compete on equal terms. Great Britain has brought home hundreds of international medals over the years and on a local level millions of people are involved with horses. Riding is an extremely popular and healthy activity and the equestrian industry continues to grow as a multi-million pound business.**

**Bringing together a wide range of sporting bodies and organisations, the British Equestrian Federation (BEF) represents, supports and leads equestrianism, from the local level to the international arena. Its Patron is HRH the Duchess of Cornwall.**



# Contents



© Kit Houghton

## Page

- 4 Introduction to the British Equestrian Federation
- 6 Our Member Bodies
- 8 Facts & Figures
- 9 More People
- 11 More Horses
- 12 More Places
- 13 More Medals
- 14 Structure of the BEF
- 15 Useful Information

© Kit Houghton



© Eric Jones



# The British Equestrian Federation

## Vision

**More People – More Horses – More Places – More Medals**

## Aims

- Speak with one voice for equestrianism
- Provide leadership for equestrianism in the UK
- Bring more people into membership
- Promote enjoyment, opportunities and successes
- Perform as an effective National Governing Body
- Support elite performers on the international stage
- Showcase our sport and underpin Great Britain's position as a leading player through hosting major events

## A National Governing Body

The British Equestrian Federation (BEF) is the National Governing Body for horse sports in the UK, affiliated to the Federation Equestre Internationale (FEI), the international governing body of equestrian sports. It exists to provide leadership, vision and purpose in steering the direction of equestrianism.

The BEF is an umbrella organisation representing the interests of 4.2 million riders, vaulters and carriage drivers in Great Britain via 16 independent member bodies. Established in 1972, it is the largest representative body within the equestrian industry and together with the British Horse Racing Board and the Thoroughbred Breeders Association forms the British Horse Industry Confederation.

As a National Governing Body the BEF works on policy issues with the FEI. It co-ordinates the British calendar of international events, disciplinary procedures, doping control and oversees the training of British international judges, stewards, vets and course designers.

At home it plays an active role in representing the common interests of its member bodies to organisations such as the British Olympic Association, UK Sport, Sport England, the Sport Aid Foundation, and Central Council for Physical Recreation.

The BEF is responsible for distributing Government funding to the equestrian sports. Funding from UK Sport and Sport England supports the BEF's work from developing the best riders, with the aim of winning medals for Great Britain, to encouraging complete beginners to get involved. Funding support is also provided by Sport Scotland for the Scottish Equestrian Association, a member body of the BEF.





# Our Member Bodies

The BEF is a federation made up of 16 independent member bodies, each of which is an equestrian organisation in its own right. The member bodies work closely together to co-ordinate policy on a wide range of issues such as equestrian facilities, coaching and volunteering. They are represented on the Council (see structure diagram on page 14). Between them they represent over 210,000 people with a wide range of equestrian interests, from elite competitive sports to trade and leisure activities.

## Member Bodies

### ASSOCIATION OF BRITISH RIDING SCHOOLS (ABRS)

T +44 (0)1736 369440 ■ F +44 (0)1736 351390  
[www.abrs-info.org](http://www.abrs-info.org)

### BRITISH DRESSAGE (BD)

T +44 (0)2476 698830 ■ F +44 (0)2476 690390  
[www.britishdressage.co.uk](http://www.britishdressage.co.uk)

### BRITISH EQUESTRIAN VAULTING (BEV)

T +44 (0)1764 682558 ■ [www.vaulting.org.uk](http://www.vaulting.org.uk)

### BRITISH EVENTING (BE)

T +44 (0)2476 698856 ■ F +44 (0)2476 697235  
[www.britisheventing.com](http://www.britisheventing.com)





**BRITISH HORSE DRIVING TRIALS ASSOCIATION (BHDTA)**

T +44 (0)2476 419078 ■ F +44 (0)2476 419079  
[www.horsedrivingtrials.co.uk](http://www.horsedrivingtrials.co.uk)

**BRITISH HORSE SOCIETY (BHS)**

T +44 (0)8701 202244 ■ F +44 (0)1926 707800  
[www.bhs.org.uk](http://www.bhs.org.uk)

**BRITISH REINING (BR)**

T +44 (0)1453 547666 ■ F +44 (0)1453 519555  
[www.britishreining.co.uk](http://www.britishreining.co.uk)

**BRITISH SHOW JUMPING ASSOCIATION (BSJA)**

T +44 (0)2476 698800 ■ F +44 (0)2476 696685  
[www.bsja.co.uk](http://www.bsja.co.uk)

**ENDURANCE GB (EGB)**

T +44 (0)2476 698863 ■ F +44 (0)2476 418429  
[www.endurancegb.co.uk](http://www.endurancegb.co.uk)

**THE PONY CLUB (PC)**

T +44 (0)2476 698300 ■ F +44 (0)2476 696836  
[www.pcuk.org](http://www.pcuk.org)

**RIDING FOR THE DISABLED ASSOCIATION (RDA)**

T +44 (0)845 658 1082 ■ F +44 (0)845 658 1083  
[www.rda.org.uk](http://www.rda.org.uk)

**SCOTTISH EQUESTRIAN ASSOCIATION (SEA)**

T +44 (0)1475 540687 ■ F +44 (0)1475 540348  
[www.s-e-a.org.uk](http://www.s-e-a.org.uk)



© Kit Houghton

**Associate Member Bodies:**

**BRITISH EQUESTRIAN TRADE ASSOCIATION (BETA)**

T +44 (0)1937 587062 ■ F +44 (0)1937 582728  
[www.beta-uk.org](http://www.beta-uk.org)

**BRITISH HORSEBALL ASSOCIATION (BHA)**

T +44 (0)115 966 4574 ■ F +44 (0)115 966 4574  
[www.horseball.org.uk](http://www.horseball.org.uk)

**MOUNTED GAMES ASSOCIATION OF GB (MGAGB)**

T +44 (0)1298 24292 ■ F +44 (0)1298 24292  
[www.mgagb.co.uk](http://www.mgagb.co.uk)

**UK POLOCROSSE ASSOCIATION (UKPA)**

T +44 (0)1226 765126 ■ F +44 (0)1226 370105  
[www.polocrosse.org.uk](http://www.polocrosse.org.uk)



© John Periam, Photojournalist

# Facts & Figures

## The Equestrian Industry in Great Britain

- Horse owners and riders spend around £4 billion per year
- The number of people who ride has almost doubled in the last seven years:
  - 4.3 million people have ridden in the last year, rising from an equivalent 2.4 million in 1999.
  - 2.1 million people ride once a month, rising from 1.4 million in 1999.
- There are 720,000 horse owners
- The industry employs up to 250,000 people directly and indirectly
- 25% of households have some interest in the horse industry
- The horse population totals over one million with 721,500 households with responsibility for the daily upkeep of a horse – this is an increase of 20% on 1999 figures.

(Sources: BETA 2006 research, The Henley centre report of research on the horse industry in Great Britain 2003)

NB: Figures exclude racing.

## Medal Success

The British Team has performed well across the board in the 7 years from 2000 to 2006, building an impressive tally on the World, Olympic and European stage:

- 14 senior medals in eventing, including 7 gold
- 63 medals across dressage, show jumping and eventing at Young Rider/Junior/Pony level:
  - 21 in eventing, including 7 gold
  - 32 in show jumping, including 18 gold
  - 10 in dressage
- 40 medals in para-equestrian dressage
- 2 medals in driving, both gold
- 8 medals in TREC, including 3 gold

A full medal table can be found on our website [www.bef.co.uk](http://www.bef.co.uk)



# More people, more horses, more places, more medals



The BEF exists to increase and improve:

- participation in all aspects of the horse world
- the number and quality of horses in the UK
- the environment and infrastructure for horse centred activities
- the skill base in and competitiveness of our equestrian sports

# More People

**The British Equestrian Federation aims to attract and retain new participants to all types of equestrian activity, working to ensure all who take part enjoy a positive experience and have the fullest opportunity to progress.**

## Getting More People Involved

Horse riding is a versatile sport that anyone, regardless of age, ability or background can have a go at. The BEF aims to attract more people into all equestrian activities, at the same time ensuring the quality of those experiences. If you are interested in trying an equestrian activity see page 15 for full details of how to get started.

## UK Coaching Certificate

Through partnership between the BEF and the Government a new set of qualifications in equestrian coaching have been created to meet the requirements of the UK Coaching Certificate.

## Long Term Athlete Development (LTAD)

The BEF has created a LTAD programme as a central reference point for coaches, parents, facilities managers, competition organisers and all members of the Federation. It details how equestrian athletes can improve their performance whether in a competitive or leisure environment. It identifies pathways to aid the development of riders, carriage drivers and vaulters. This framework is available from the BEF as a separate document.

## Volunteering

Volunteers form one of equestrian sport's most valuable assets. The BEF is working together with all member bodies to ensure that our dedicated volunteers continue to multiply in numbers and benefit from the best experience possible.





© Equipics

*British Breeding* has been established by the British Equestrian Federation to support continued improvement in the quality of British bred horses and ponies.

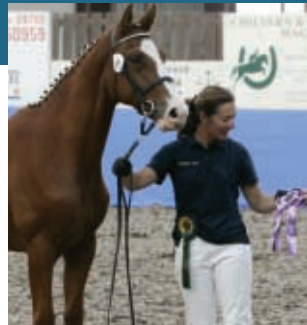
## More Horses

### Futurity Young Horse Evaluations

Young horses and ponies bred for careers in dressage, show jumping and eventing are evaluated to assess their potential and recognise the most talented young horses. This programme is a combination of the former futurity and young horse evaluations to form a consistent pathway for sport horses and ponies from foals to six years old.

### Breeders' Quality Mark (BQM)

The prestigious BQM recognises British breeders who are working to the highest standards and consistently apply good practice in the day to day management of their equine breeding establishments.



© DP Photo



### National Equine Database (NED)

The BEF is involved in developing NED in partnership with the Department for the Environment, Food and Rural Affairs (DEFRA). The main aim of the project is to make accessible, up-to-date and reliable information on all equines born or domiciled in the UK.

[www.nedonline.co.uk](http://www.nedonline.co.uk)

### Equine Research

The BEF supports equine research and sponsors BEFRED (British Equestrian Federation Researching Equines Database). This is a free website allowing the user to search abstracts of research carried out into equine topics.

[www.befred.org](http://www.befred.org)

# More Places

**The British Equestrian Federation assists in providing sustainable facilities to meet the development and competition needs of the sport at all levels.**

## Increasing Accessibility

The BEF is working to raise the quality and quantity of equestrian facilities. We aim to increase accessibility so that people from the widest ranges of age, background and ability can benefit from the experiences offered by equestrian activities.

## Improving Training Facilities

The BEF aims to create, improve and support high quality training and competition facilities which will enhance preparation of elite competitors and benefit riders of all levels.



© Talland School of Equitation



© British Horse Society



## The BEF Facilities Strategy

The BEF and its member bodies have come up with a joint plan for equestrian facilities which establishes ways in which this can be achieved. This is available as a separate document on request.



© Talland School of Equitation

Further information about the work the BEF does can be found on our website [www.bef.co.uk](http://www.bef.co.uk)

## More Medals

**The British Equestrian Federation works to ensure that Great Britain is represented by the most talented athletes and horses. The UK Sport funded World Class Programme identifies and nurtures talented British riders and horses with the overall aim of winning more medals on the World Stage.**

The World Class Programme has three key areas:

- Identifying talent
- Developing talent
- Delivering performance on the world stage

## World Class Performance Programme

This Programme identifies and develops the most talented rider / horse combinations, working with them to ensure they reach their maximum potential and deliver the best possible results at Championships in the Olympic and Paralympic disciplines – Eventing, Show Jumping, Dressage and Para-Equestrian Dressage. The Programme funds the riders and Team staff for the European and World Championships and the Olympic / Paralympic Games, as well as supporting the work necessary to prepare for these competitions (including coaching, veterinary support and research and development.)



© Kevin Sparrow



© Kit Houghton

## World Class Development Programme

This Programme underpins the Performance Programme to provide talented young riders with the best opportunity to maximise their competitive potential through individually tailored programmes. The riders are nurtured, developed and inspired to become successful competitors, developing the skills and competencies they need to compete at the highest level.

Both Programmes provide expert coaching, medical and veterinary support plus advice on fitness, nutrition, sports psychology and equine management – giving Great Britain the best chance of medal success.

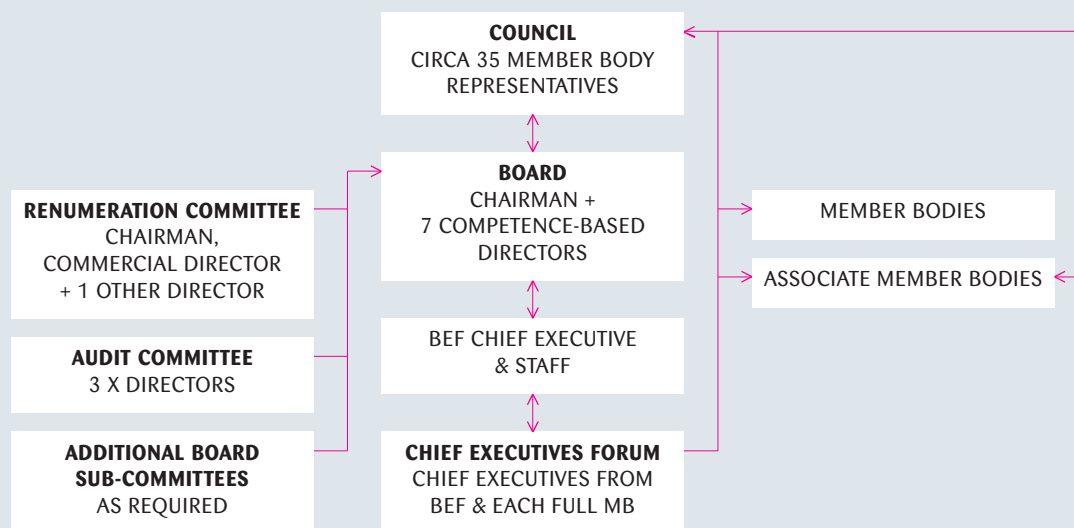
## The Equine Pathway

Introduced in 2006, this programme seeks to identify and support horses that show the potential to reach Olympic level. World Class will work with the owners and riders to ensure that the horse can reach its maximum potential.

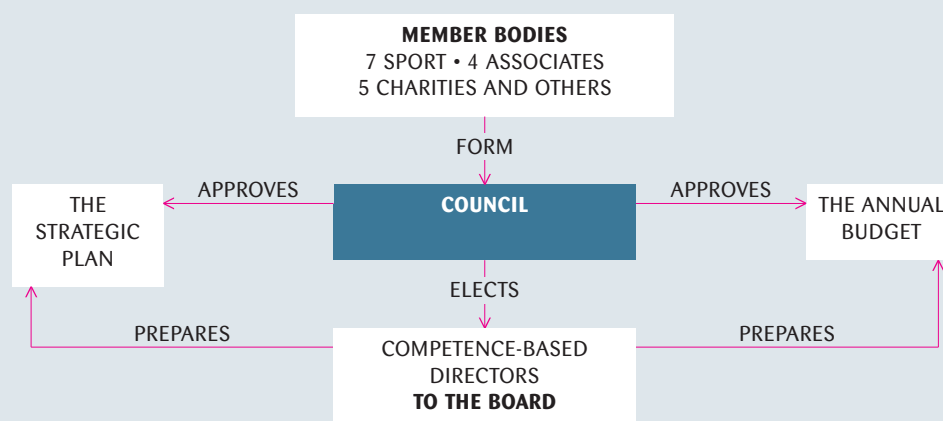
The World Class Programme also financially supports the Olympic Disciplines' Pony, Junior and Young Rider programmes.

# Structure of the BEF

## HOW THE BEF IS STRUCTURED



## THE RELATIONSHIP BETWEEN THE BEF COUNCIL AND BOARD





# Useful Information

## Interested in trying an equestrian activity?

Our member bodies are the best place to start if you are interested in getting involved in riding, driving or vaulting, either recreationally or competitively.

If you want to learn to ride, good lessons are important. To get you started the following organisations can help: The British Horse Society, The Association of British Riding Schools, The Riding for the Disabled Association and The Pony Club.

For specific activities try our other member bodies, see page 6 for a full list and how to contact them.

## Contacting the BEF

Further information about all our projects, current news and a full calendar of equestrian events is available on our website. The BEF office is open from 9am – 5pm Monday to Friday and is happy to answer your general enquiries.

British Equestrian Federation  
Stoneleigh Park, Kenilworth  
Warwickshire CV8 2RH

**T** +44 (0)2476 698871

**F** +44 (0)2476 696484

**E** [info@bef.co.uk](mailto:info@bef.co.uk)

[www.bef.co.uk](http://www.bef.co.uk)



The BEF is a company limited by guarantee. Registered in England No. 3174767. VAT Registration No. 4876639 80.  
Registered office: Stoneleigh Park, Kenilworth, Warwickshire CV8 2RH.

Design by: [www.touchmedia.uk.net](http://www.touchmedia.uk.net)  
Photographs supplied by: Equipics; Eric Jones; John Periam, Photojournalist; Kit Houghton;  
The British Horse Society; Kevin Sparrow; The Talland School of Equitation



BRITISH  
EQUESTRIAN  
FEDERATION



sportscotland

British Equestrian Federation  
Stoneleigh Park, Kenilworth  
Warwickshire CV8 2RH  
**T** +44 (0)2476 698871  
**F** +44 (0)2476 696484  
**E** [info@bef.co.uk](mailto:info@bef.co.uk)

[www.bef.co.uk](http://www.bef.co.uk)