



BRITISH  
EQUESTRIAN  
FEDERATION

## Agenda



5pm	Welcome & Introductions
5.20pm	The Sporting Landscape & Equestrian
6pm	Hoof - an Olympic Legacy.....the model
6.15pm	The Gold Challenge
6.45pm	Refreshments.
7.15pm	Your local County Sport Partnerships
7.45pm	The Riding School - round table discussion
8.05pm	Feeding the team GBR horses
8.20pm	<b>Hoof opportunities, funding information &amp; shaping your network - round table discussion</b>
9pm	close



# Success for **hoof** East Midlands?

AN EQUESTRIAN LEGACY

## Riding

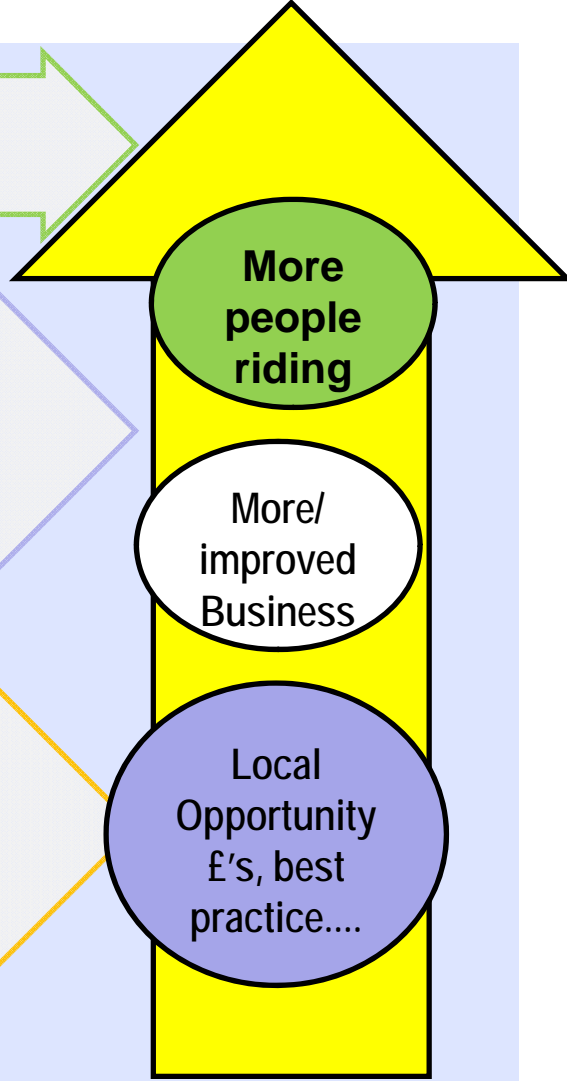
- Programmes aimed at getting more people riding

## Business

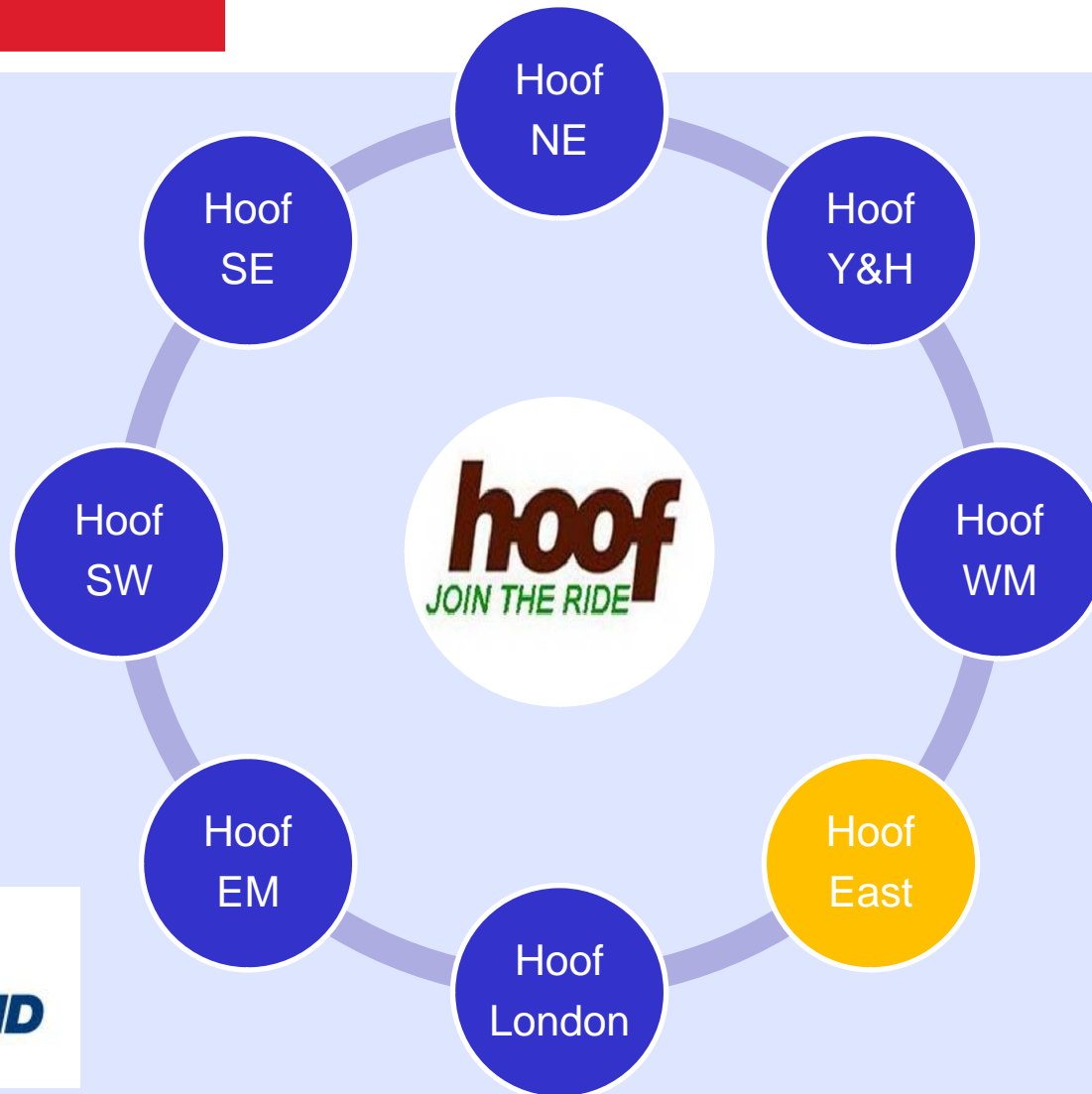
- Toolkit – to empower/support business
- Network events
- Regional links to other Hoof networks
- Virtual forum

## People

- Communication/PR
- CPD opportunities (workshops/guestspeakers)
- Staff Training & Skill development
- Volunteers – recruit, retain & recognise



# Hoof opportunities





BRITISH  
EQUESTRIAN  
FEDERATION

# Opportunities

- There will be a range of capital funding opportunities to help from now until March 2013 enabling:
  - facility development to improve buildings
  - or provide equipment
- The aims of which is to increase opportunities for participation adding extra riding hours
- and to increase the quality of the riding experience



BRITISH  
EQUESTRIAN  
FEDERATION

## Examples are -

- Supported projects so far in London include helping the development of projects such as the Ebony Horse Club
- Assisting in the provision of a roof on an outdoor school giving more riding days
- Assisting in the provision of lighting to an indoor school giving more riding days
- Providing Polocrosse equipment to enable games in parks in London



BRITISH  
EQUESTRIAN  
FEDERATION

## How?

- There will be an open application process and you can bid for funding via an application form
- There will be some guidance to help
- You will need to have a partnership contribution to make yourself. If you bid for £5,000 you will need to have £5,000 as well
- Good luck!

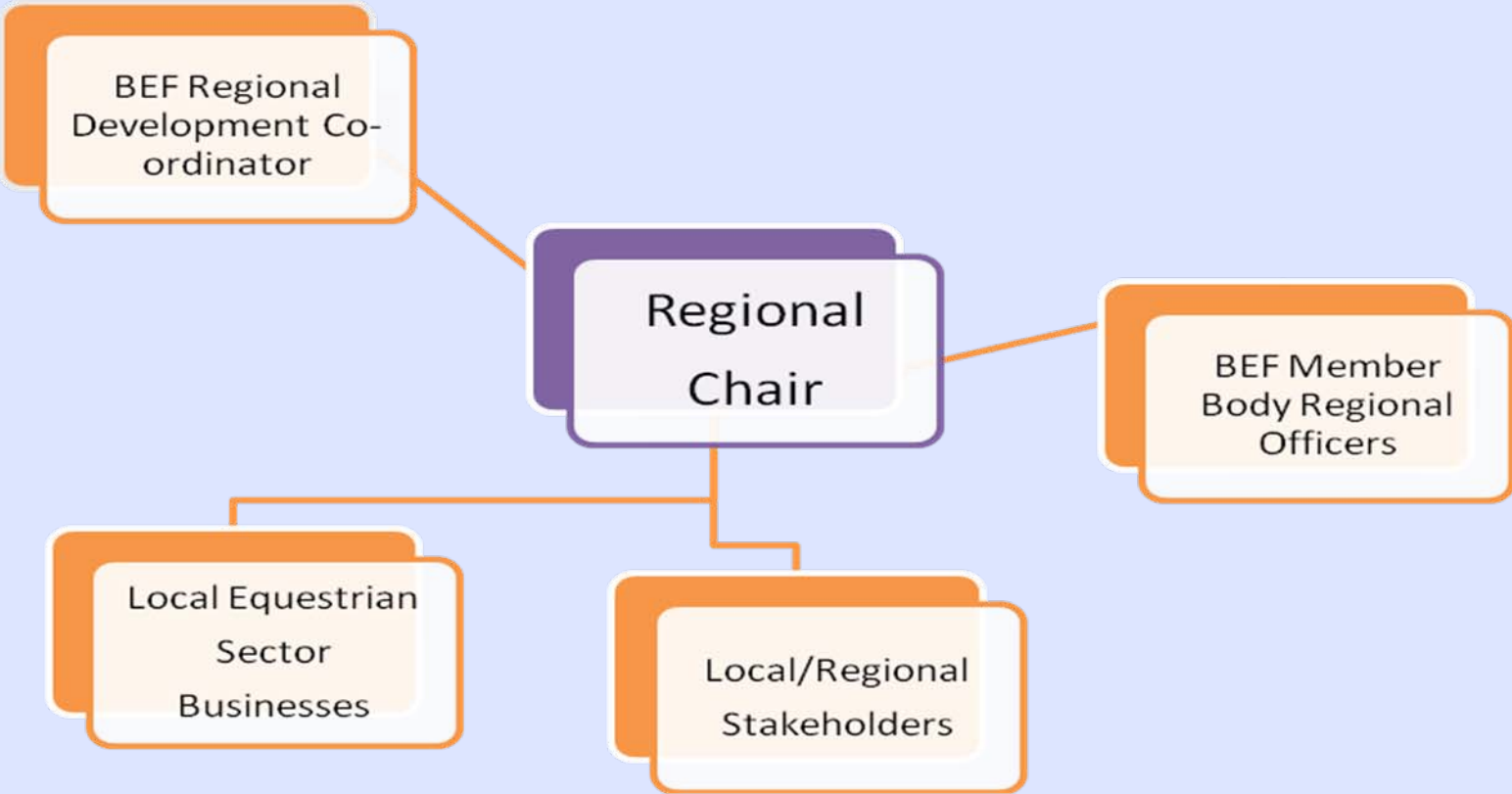


BRITISH  
EQUESTRIAN  
FEDERATION

# Opportunities



## East





BRITISH  
EQUESTRIAN  
FEDERATION

# HOOF EM Regional Chair



**hoof**  
JOIN THE RIDE

- **BEF Volunteer**
- **Expenses remunerated**
- **Role Description**
- **Recruitment Campaign (August)**
- **Autumn (Oct) Start**

# Success for Hoof East Midlands?



Looking at the 3 key areas of Hoof?



## Riding

- Programmes aimed at getting more people riding

## Business

- Toolkit – to empower/support business
- Network events
- Regional links to other Hoof networks
- Virtual forum

1. Which areas interest you?
2. What would you like see the network offer?
3. Could you host, sponsor or contribute to a future event?

## People

- Communication/PR
- CPD opportunities (workshops/guestspeakers)
- Staff Training & Skill development
- Volunteers – recruit, retain , reward & recognise

BRITISH  
EQUESTRIAN  
FEDERATION

**hoof**  
AN EQUESTRIAN LEGACY

EAST

**LIVING SPORT**  
Cambridgeshire & Peterborough Sports Partnership



EXCELLENCE IN SPORTS COACHING



SkillsActive

**GOLD CHALLENGE**

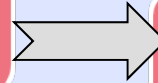
CHOOSE YOUR CHALLENGE  
CHOOSE YOUR CAUSE

**Sportivate**

Step up Step forward  
GoAimed.co.uk



PEOPLE



YOU

4. Hoof Networks across the regions have provided sessions on a number of topics.

What would **you** be interested in supporting as a Hoof East Member in the future?

8. In which areas of the Hoof Network are you interested in getting involved?



BRITISH  
EQUESTRIAN  
FEDERATION

## Aims of today



- Introduce the HOOOF brand and concept
- Network/Collaborative thinking
- Identify Opportunities
- Listen
- Enjoy!



BRITISH  
EQUESTRIAN  
FEDERATION

# Thank you speakers

[gill.barham@bef.co.uk](mailto:gill.barham@bef.co.uk)

