



County Sports Partnerships

An overview

The CSP

- What are they?
- How do they work?
- What do they do?
- Who is in them?
- What can they do for me?

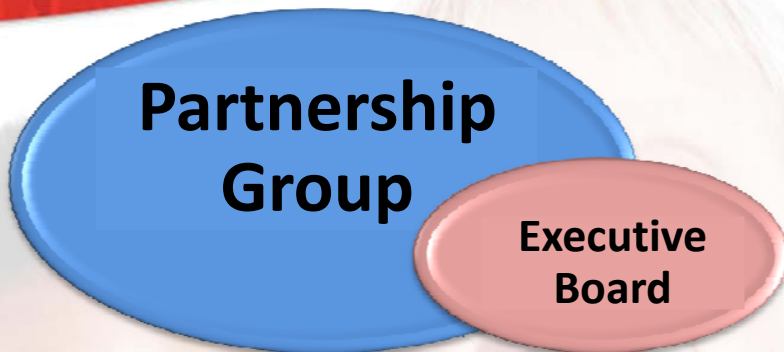
What?

- A collection of local partners
- Funded by different sources
- 5 in the East Mids and 49 across England
- Number of different structures / hosting and staffing structures
- All CSPs core funded to support NGBs deliver WSP outcomes

- Services governed by a core specification document and funding priorities but...
- More people (adults) playing
- Infrastructure – volunteers, clubs, coaches, officials
- Communication / marketing
- Networks



The Structure



Talent ID and Development

Participation children and young people	14-16 Drop-off	Participation adults	Coaching and coaching system	Stronger Sports Clubs	Volunteers, officials and workforce	Equity and Disability Sport	Facilities	2012
-----------------------------------------	----------------	----------------------	------------------------------	-----------------------	-------------------------------------	-----------------------------	------------	------



“To make Northamptonshire one of the fittest, most active and successful sporting counties in England by 2020”





4 Aspirations

Increase participation in adults and young people

Identify Talent and Performance Pathways

Develop Infrastructure – coaches, volunteers and facilities

Strengthen the Sports System

“To make Northamptonshire one of the fittest, most active and successful sporting counties in England by 2020”



CSP Strategy

10 Frameworks

Participation
children and
young people

Drop off
(16-24 yr olds)

Adult
participation

Coaches and
the coaching
system

Stronger
sports clubs

Volunteers,
officials and paid
workforce

Talent I.D. &
Development

Disability
Sport

Access to
Sports
Facilities

Legacy from
2012

*“To make Northamptonshire one of the fittest, most active
and successful sporting counties in England by 2020”*

What or how?

- **SPORTIVATE** - £98k pa, 14-25yr olds, 6-8wk coaching, 1st of 4yrs.
- **GET SPORTY** - £75k pa, 16+, various, Olympic Sports, 3rd of 3yrs.
- **COACHING NORTHANTS** - £40k pa, adults, scholarships, agency, employment opps, 2nd of 4yrs.
- **SPORTING VOLUNTEERS** - £20k pa, 14+, recruitment, placements, learning/CPD, incentives, 3rd of 5yrs.

The Known's – Existing / Future Delivery

- P.A. PROJECTS (AoR, WALK NORTHANTS, LGM)
- EVENTS - £various pa, adults, direct delivery or support (Sports Awards, Sport Relief, The Run)
- DISABILITY SPORT – activities, events, programmes
- SCHOOL SPORT / OLYMPICS
- TRAINING / CPD – Level 1,2,3 & generic, MOS
- CLUB DEVELOPMENT –stronger clubs/more capacity
- FACILITY DEVELOPMENT – more & accessible, indoor & outdoor
- NGB PROGRAMMES – structures/pathways, activities/sessions
- LEADERSHIP ROLE – strategy, structure, communication, advocacy, network

“To make Northamptonshire one of the fittest, most active and successful sporting counties in England by 2020”

Funding Support

- Go Gold / Champions Fund
- LRS employ Funding Advice Officer (not a funding distributor!)
- Advise clubs on relevant funding streams & support to write funding applications
- Will not get involved in major capital projects - 125 clubs supported in 2010

- Safeguarding / Equity Workshops
- Subsidised prices
- Next programme from Sept 11 to June 12
- Scholarships may be available



Coaching

- All CSPs employ a Coaching Development Manager
- Coaching agency
- Coaches database, register at www.lrsport.org.uk/lrscoachingdatabase or www.coachingnorthants.org
 - On line CV builder
 - Bi monthly newsletters
 - Regular reminders

General

- Each local authority area has a Local Sports Alliance. Each is different, but may offer:
 - Coach or player bursaries
 - Player / Volunteer recognition / local sports awards
 - Club/Coach evenings
- LRS / local authorities keen to work with clubs who want to grow membership, particularly 16+
 - Possible funding available via the Active Together programme
- Promote your club at our on-line club directory
 - www.lrsport.org.uk/clubuploader
- Can you offer volunteer placement opportunities? We have a bank of volunteers keen to help out. Contact Lizzi Major, e.major@lboro.ac.uk
- www.lrsport.org.uk

Sportivate



LOTTERY FUNDED

‘Places People Play’

- ‘Places People Play’ - London 2012 mass participation legacy programme launched on 15 November 2010.
- £135 million initiative made possible by the Government’s National Lottery reforms, bringing additional funding into grassroots sport.
- Delivered by Sport England, in partnership with the BOA, the BPA and LOCOG.

'Play'

- £32 million over 4 years (April 2011 - March 2015)
- Vision:
 - Deliver, by 2015, 300,000 more participants aged 14-25 having taken part in a sporting activity of their choice; and
 - 120,000 of them being inspired by the power of sport and London 2012 to continue taking part.



Target Group

- 14-25 year olds - 'semi-sporty'.
- Promote long-term behaviour change.
- For 14-16 year olds - transition into community sport before they leave school.
- For 16-25 year olds - grow the number of people doing sport each week.



Sports

- A broad definition of sport is being used although Sportivate is being seen as a sports programme.
- Weekly coaching sessions in the chosen sport (min 6 weeks, max 8 weeks).
- Projects should demonstrate:
 - suitable exit routes to continue participation;
 - intelligence that participants want to take part; and
 - can be provided and sustained locally.



Eligible Costs

- Staffing to deliver projects.
- Facility hire.
- Transport.
- Marketing and publicity.
- Training/coaching courses.
- Capital items/equipment – *current Lottery policy is restrictive, Sport England to issue guidance.*

Ineligible Costs

- Overheads – storage of equipment and insurance.
- Statutory items e.g. cycle lights.
- Contingency costs e.g. replacing damaged equipment.
- Purchase of vehicles.
- Buildings and refurbishment - bike sheds, pavilions etc.
- Items with poor value for money – horses, bike trailers etc.
- Projects for gifted and talented participants.



Evaluation

2 main KPIs:

- **KPI Retain** – The number of participants who attend:
 - 5 of 6; 6 of 7; or 7 of 8 weekly coaching sessions.
- **KPI Sustain** – The number of participants who indicated that after taking part in Sportivate weekly coaching sessions they continued to participate regularly in activity.

Key Dates 2011-2012

Activity	Date
Delivery Plan Submission	Friday 15 th April 2011*
Steering Group Assess Applications	Thursday 5 th May 2011
Final Plan Submission	Thursday 12 th May 2011
Sport England Sign Off Plans	15 th June 2011
Delivery of Sportivate Commences	July 2011
Year 1 – Under-spends distributed	Summer 2011
KPI Submission	Monday 3 rd October 2011*
Steering Group Meeting	Thursday 6 th October 2011
Year 2 Delivery Plan Submission	Monday 19 th December 2011*
Steering Group Assess Applications	Tuesday 17 th January 2012
Year 2 Final Plan Submission	Wednesday 25 th January 2012

The Challenges !

- Active People - 1 million target
- NGB Whole Sport Plans
- Local Authority – landscape & funding
- PE and School Sport
- PCT / Health
- CSP core delivery / partnership working
- 2012 legacy

“To make Northamptonshire one of the fittest, most active and successful sporting counties in England by 2020”

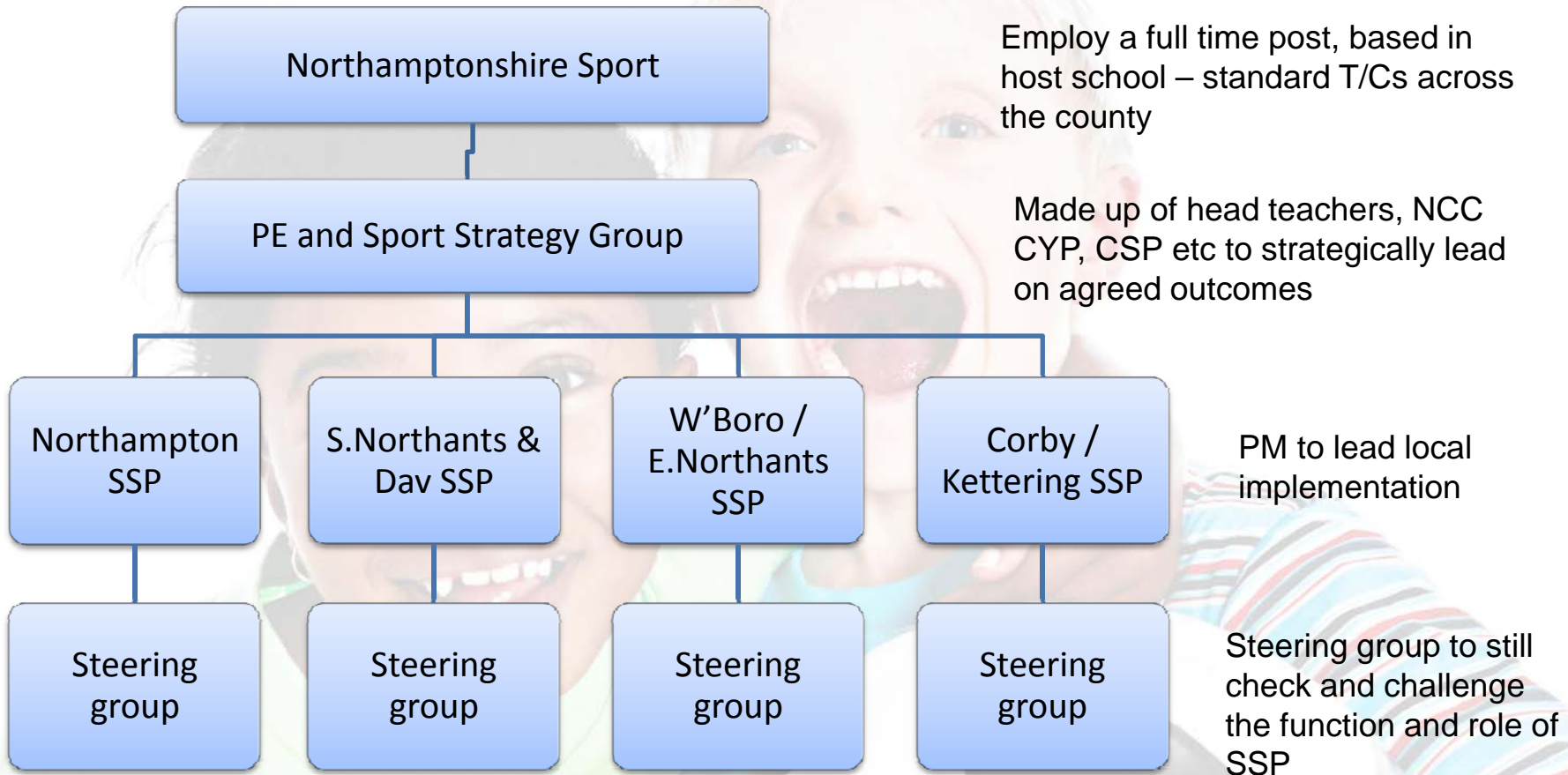
School Sport

- Significant change to the status quo as announced in October 10 CSR, including reduction of the annual budget
- No PLT funding from April 2011 onwards
- Competition manager funding ceased from end of March 2011 – but locally employed until August 2011
- PDM function as is not funded.

- As from September 1st 2011, eligible schools to receive funding to support a 1 day a week PE teacher release to fulfil a SSCO type role
- 3 day a week funding package to support a School Games Organiser (SGO)
- Focus of these roles will be 1) increasing participation; 2) increasing inter school comp (Level 2 of SG); ensuring progression to Level 3 and local club / community sport

What has been happening?

- Lots of local discussions about continuing to sustain a network
- County discussions now taking shape
- Proposed to develop a new system, with available resources shared and utilised as effectively as possible
- Outcomes – high quality PE, increase levels of participation, increase in volunteering and leadership, health & well being, whole school improvement



Employ a full time post, based in host school – standard T/Cs across the county

Made up of head teachers, NCC CYP, CSP etc to strategically lead on agreed outcomes

PM to lead local implementation

Steering group to still check and challenge the function and role of SSP

NGBs & Sports Development

- Some NGBs losing some funding as SE 'turn the screws' re: participation targets
- Locally SDO functions under pressure to make efficiency savings, generate income and at risk of reduced funding