



BRITISH  
EQUESTRIAN  
FEDERATION

## **Lead Body Seminar**

**24<sup>th</sup> January 2007**

Presentation by  
Graham Suggett  
Director of Equine Development



BRITISH  
EQUESTRIAN  
FEDERATION

## Mission

Working as a cohesive, unified, progressive and modern organisation of **independent** member bodies, the Federation will work together for the collective good of horse sports in general, as well as for individual disciplines/organisations.



BRITISH  
EQUESTRIAN  
FEDERATION

# Members Sports



- British Dressage
- British Eventing
- British Show Jumping Association
- Endurance GB
- British Reining
- British Equestrian Vaulting
- British Horse Driving Trials Association



BRITISH  
EQUESTRIAN  
FEDERATION

# Members

## Charities & Other Bodies

- British Horse Society (charity)
- The Pony Club (charity)
- Riding for the Disabled Association (charity)
- Association of British Riding Schools
- Scottish Equestrian Association





BRITISH  
EQUESTRIAN  
FEDERATION

# Members

## Associate Members



- British Equestrian Trade Association
- Mounted Games Association of GB
- British Horseball Association
- UK Polocrosse Association



BRITISH  
EQUESTRIAN  
FEDERATION

## Core Activities



- Run the GB International Teams in Dressage, Eventing, Show Jumping, Endurance, Reining and Vaulting.
- Equine Breeding
- Coaching
- Facilities



BRITISH  
EQUESTRIAN  
FEDERATION

# Members

## Potential Members



- *British Breeding*
- A body representing equine research
- A body representing the Showing community
- ?



**BRITISH  
EQUESTRIAN  
FEDERATION**

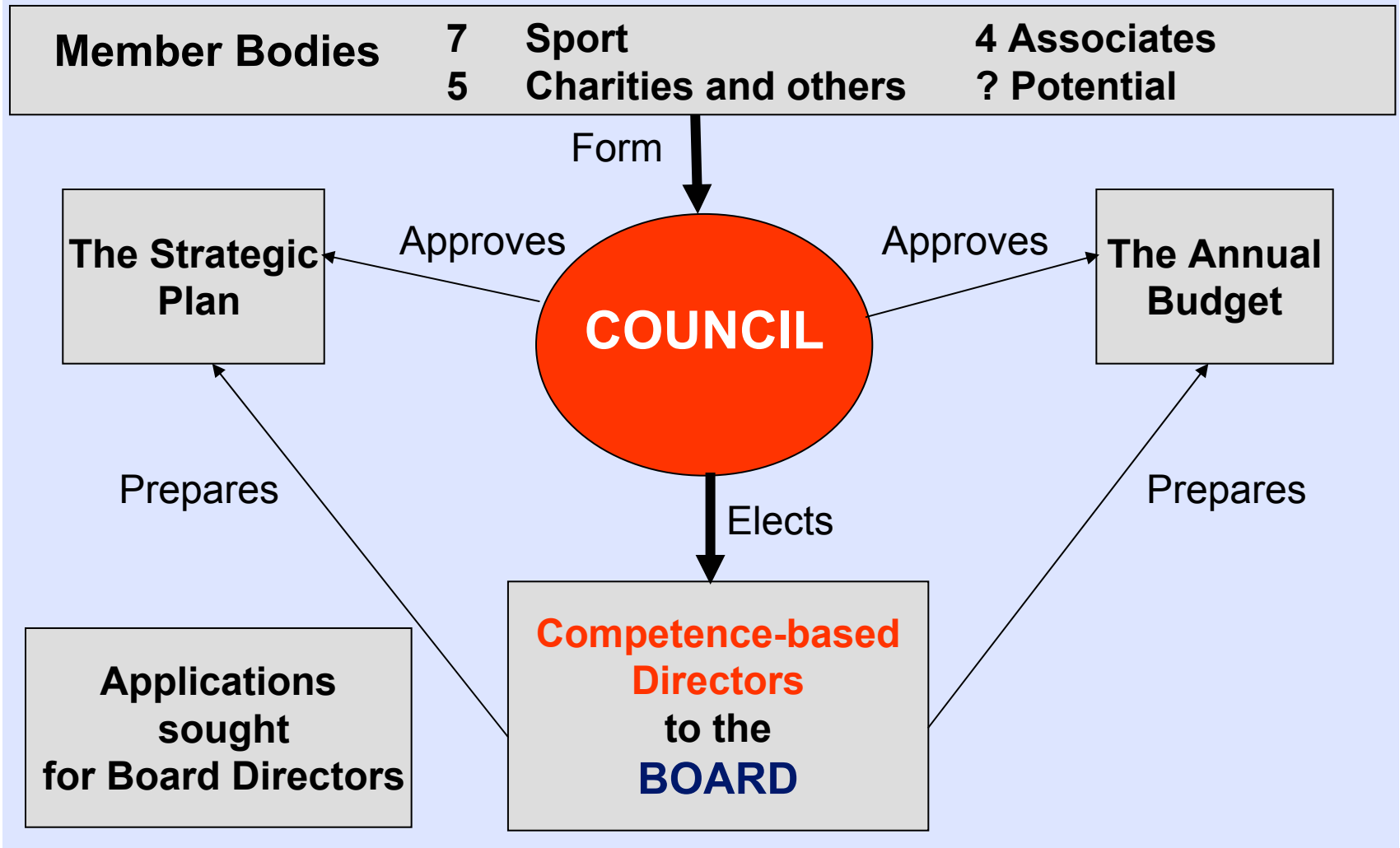
**To become a member or associate member of BEF an organisation has to fulfil four criteria: -**

- 1 Be a recognised corporate body**
- 2 Submit three years of audited accounts**
- 3 Be the only body representing that area of work**
- 4 Be able to pay the annual subscription**



BRITISH  
EQUESTRIAN  
FEDERATION

# The Council & Board





BRITISH  
EQUESTRIAN  
FEDERATION

## High Level Aims

- **speak with one voice**
- **bring more people into membership**
- **develop sporting infrastructure promoting:**
  - participation
  - enjoyment
  - career opportunities
  - success for athletes, volunteers, officials, owners, breeders, horses & ponies.



BRITISH  
EQUESTRIAN  
FEDERATION

# Strengths

- stable
- progressive
- providing leadership within the industry
- modernising
- punching above weight on the world stage
- exceeding targets
- with a good executive team





**BRITISH  
EQUESTRIAN  
FEDERATION**

**Registered  
Company**

**Four years of  
audited  
accounts**



**Funded by  
BEF from  
Sport UK  
grants**

**Established by the British Equestrian Federation to promote the  
breeding of British horses and ponies**



BRITISH  
EQUESTRIAN  
FEDERATION

## **Definition of British-bred**

**Born in the UK or born to a dam normally domiciled in the UK**

# Strategy for the Horse Industry in England and Wales



British Horse Industry Confederation



BRITISH  
EQUESTRIAN  
FEDERATION

## **AIM 8: Improve the quality and breeding of horses and ponies**

**Establish LEAD BODIES**

**Capitalise on NED to improve breeding**

**Raise standards in studs**

**Balance genetic improvement with genetic diversity**

**Conservation of native and indigenous horses and ponies**

**Training of young horses**



BRITISH  
EQUESTRIAN  
FEDERATION

## **Establish LEAD BODIES**

- 1 Sport horses and ponies**
- 2 Native and indigenous horses and ponies**
- 3 Recreation horses and ponies**
- 4 Racing Thoroughbred**



BRITISH  
EQUESTRIAN  
FEDERATION

## Establish LEAD BODIES

- 1 Sport horses and ponies *British Breeding*
- 2 Native and indigenous horses and ponies BHS
- 3 Recreation horses and ponies BHS
- 4 Racing Thoroughbred TBA



BRITISH  
EQUESTRIAN  
FEDERATION

## Sport horses and ponies **LEAD BODY**

**In order to assist in the improvement of the quality of horses and ponies, the Lead Body would: -**

- encourage greater cooperation within and between the breeding sectors,**
- provide a more efficient communication network between breeders, breeding organisations, competitive and recreational riders and drivers and their organisations.**
- develop much closer links between thoroughbred and non-thoroughbred breeders**



BRITISH  
EQUESTRIAN  
FEDERATION

## Sport horses and ponies **LEAD BODY**

**In order to assist in the improvement of the quality of horses and ponies, the Lead Body would: -**

- **encourage market research into the requirements of buyers of sport and recreational horses and ponies, to match the knowledge already available for racehorses and native breeds;**
- **demonstrate and publicise the benefits of using proven stallions and semen over indiscriminate breeding;**
- **research the effect of introducing an industry-monitored stallion approval scheme;**
- **reduce duplication of effort between breeding organisations;**



BRITISH  
EQUESTRIAN  
FEDERATION

# Sport horses and ponies LEAD BODY

**In order to assist in the improvement of the quality of horses and ponies, the Lead Body would: -**

- offer the opportunity to develop Breeders Support Units, which could become resource and educational centres for breeders, develop ‘flagship’ breeding schemes and evaluate genetic progress, as well as facilitate work currently being carried out on a voluntary basis to improve breeding;
- help persuade breeding organizations of the need to introduce more standardised systems of evaluation;
- help publicise the successes of equines identified as having potential during evaluations, and encourage the entry of young stock for evaluation;
- help make best use of the National Equine Database and
- publicise the benefits of the Breeders’ Quality Mark scheme to both studs and customers, and encourage studs to join.