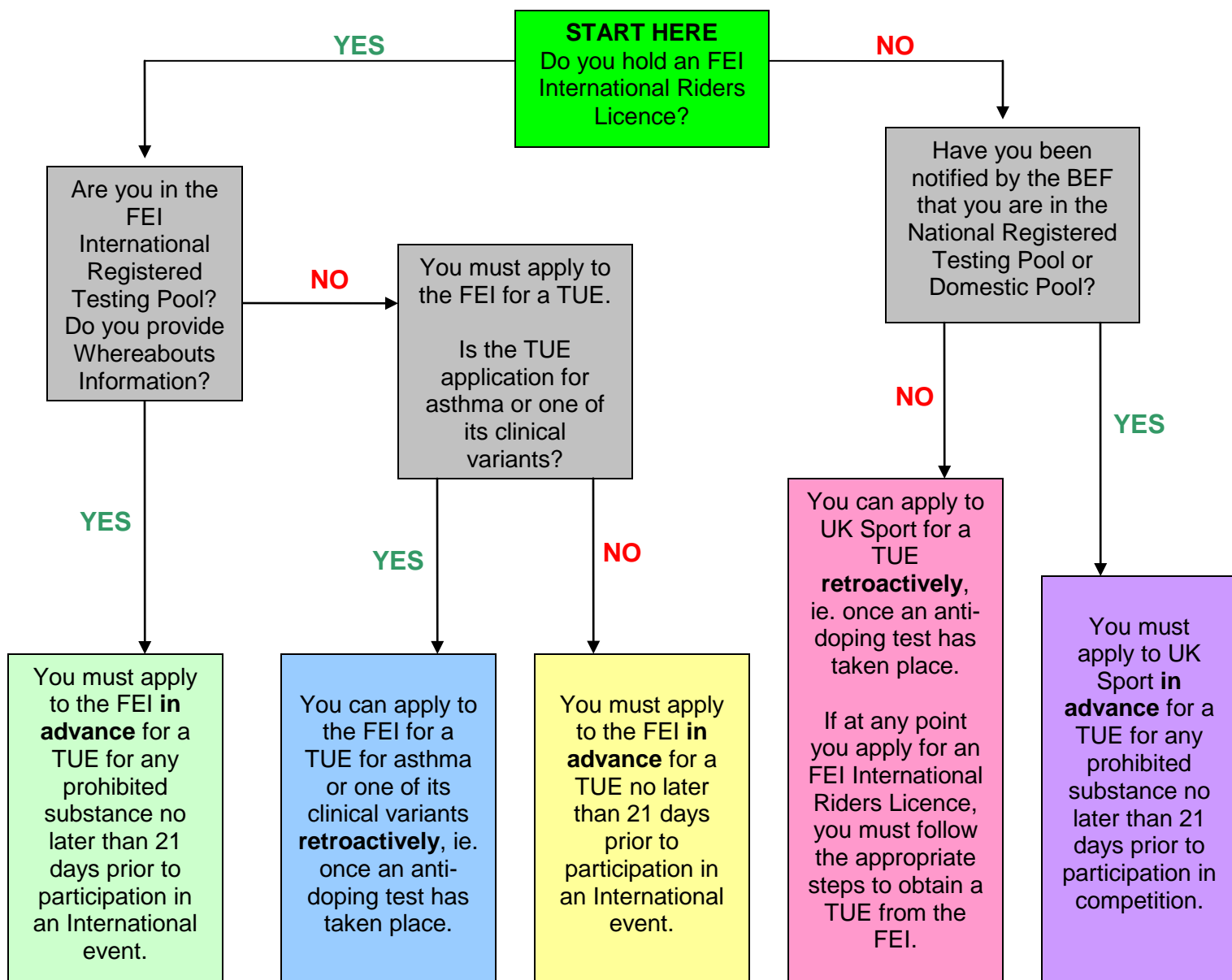


# APPLICATIONS FOR THERAPEUTIC USE EXEMPTIONS (TUEs)

Anti Doping Rules for Human Athletes, effective 01 March 2009



## Important Note Regarding All TUE Applications for Asthma or Its Clinical Variants

If you are applying for a TUE for asthma or one of its clinical variants, either in advance or retroactively, you should note that the following from Annex 1 of the International Standard for Therapeutic Use Exemptions:

### The minimal requirements for the medical file to be used for the TUE process in the case of asthma and its clinical variants

The file must reflect current best medical practice to include:

- 1). A complete medical history.
- 2). A comprehensive report of the clinical examination with specific focus on the respiratory system.
- 3). A report of spirometry with the measure of the Forced Expiratory Volume in 1 second (FEV1).
- 4). If airway obstruction is present, the spirometry will be repeated after inhalation of a short acting Beta-2 Agonist to demonstrate the reversibility of bronchoconstriction.
- 5). In the absence of reversible airway obstruction, a bronchial provocation test is required to establish the presence of airway hyper-responsiveness.
- 6). Exact name, speciality, address (including telephone, email, fax) of examining physician.